

# Altecnic Essentials



Thermostatic Mixing Valves

Pressure Reducing Valves

Radiator Valves

Sealed Systems

Vessels

Safety Relief Valves

Dirt & Air Separation

Backflow Prevention

Ball Valves

Metering

Area Sales Managers

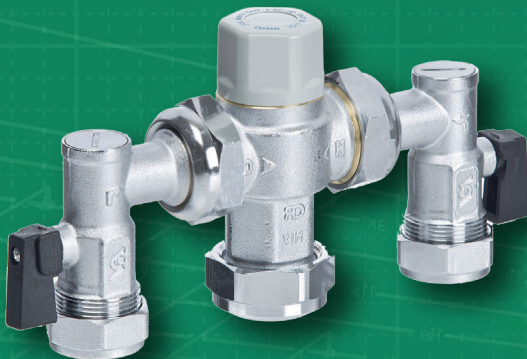


[altecnic.co.uk](http://altecnic.co.uk)

altecnic

# Thermostatic Mixing Valves

## Merchant Mixing Valves



### Product Code

### Box Qty

### Price

**CA-100822**  
15mm Merchant Mixing  
Valve T Pattern

20

**CA-100824**  
22mm Merchant Mixing  
Valve T Pattern

20

**CA-100827**  
15mm Merchant Mixing  
Valve MX Tails

20

**CA-100828**  
22mm Merchant Mixing  
Valve MX Tails

20



E&O.E.

### Notes

---



---



---



---

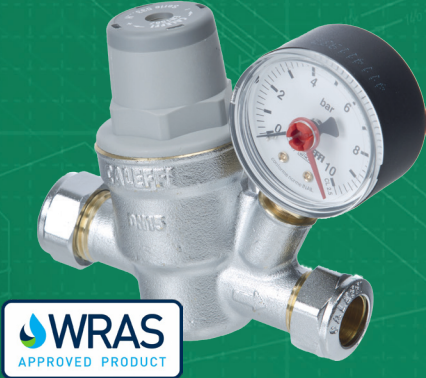


---

# Pressure Reducing Valves



## Pressure Reducing Valves



Product Code	Box Qty	Price
<b>533641H</b> 15mm Caleffi Pressure Reducing Valve No Gauge	20	
<b>533651H</b> 22mm Caleffi Pressure Reducing Valve No Gauge	20	
<b>533841H</b> 15mm Caleffi Pressure Reducing Valve c/w Gauge	20	
<b>533851H</b> 22mm Caleffi Pressure Reducing Valve c/w Gauge	20	
<b>533861H</b> 28mm Caleffi Pressure Reducing Valve c/w Gauge	20	
<b>WI-557310</b> 0-10 Bar 50mm Dial 1/4" Pressure Gauge	30	

E&O.E.

Notes

---



---



---



---



---

# Radiator Valves

## Ecocal® Radiator Valves



Product Code	Box Qty	Price
<b>200440LTC</b> 10mm x ½" Ecocal Angled Twin Pack White Heads	20	
<b>200445LTC</b> 15mm x ½" Ecocal Angled Twin Pack White Heads	20	
<b>200455LTC</b> 15mm x ½" Ecocal Angled Twin Pack Chrome Heads	20	
<b>200485LTC</b> 15mm x ½" Ecocal Straight Twin Pack Chrome Heads	20	
<b>410410LTC</b> 10mm x ½" Eclipse Angled Manual Radiator Valves	10	
<b>410415LTC</b> 15mm x ½" Eclipse Angled Manual Radiator Valves	50	

E&O.E.

### Notes

---



---



---



---



---

# Radiator Valves

altecnic

## Eres Radiator Valves



Product Code	Box Qty	Price
<b>ER-10MMTWPK</b> 10/8mm Eres Angled Twin Pack White Heads	24	
<b>ER-15MMTWPK</b> 15mm Eres Angled Twin Pack White Heads	24	
<b>ER-15MMSTWCH</b> 15mm Eres Straight Twin Pack Chrome Heads	24	
<b>ER-15MMATWCH</b> 15mm Eres Angled Twin Pack Chrome Heads	24	
<b>ER-15MMCTWCH</b> 15mm Eres Corner Twin Pack Chrome Heads	24	
<b>ER-10MMVAL</b> 10/8mm Eres Angled Manual Radiator Valves	24	
<b>ER-15MMVAL</b> 15mm Eres Angled Manual Radiator Valves	24	
<b>ER-15MMDOVAL</b> 15mm Eres Drain Off Valve	24	

E&O.E.

### Notes

---



---



---



---



---

# Radiator Valves

## Radiator Valves



### Product Code

Box Qty

Price

**YU-JQAL024LC**

38

15mm x 1/2" Modern Polished  
Radiator Valves Straight Pair

**YU-JQAL025LC**

38

15mm x 1/2" Modern Polished  
Radiator Valves Angled Pair



**YU-JQAL029LC**

20

15mm x 1/2" Modern Polished  
Radiator Valves Corner Pair

**105-3001**

20

Dual Fuel 15mm x 1/2"  
Corner Radiator Valves

**106-3002**

24

1/2" x 1/2" Dual Fuel  
Tee Piece



**105-3002**

16

15mm x 1/2" Square Polished  
Radiator Valves Straight Pair

**105-3003**

16

15mm x 1/2" Square Polished  
Radiator Valves Angled Pair



E&O.E.

### Notes

---



---



---



---



---

# Radiator Valves



## Radiator Valves



Product Code	Box Qty	Price
<b>106-1009</b> 15mm x 100mm Self Cutting Radiator Extension	24	
<b>106-1012</b> 15mm x 60mm Self Cutting Radiator Extension	30	
<b>YU-JQAL213HC</b> 1/5" x 15mm Drain Off Tail Piece	50	
<b>459004</b> 15mm x 10mm Push Fit Stem Elbows	25	
<b>106-2001</b> 15mm x 15mm Push Fit Stem Elbows	100	

## Bypass Valves



Product Code	Box Qty	Price
<b>519002 GLW</b> 22mm Full Flow Differential Bypass Valve	50	
<b>ER-22MMANGBI</b> 22mm Angled Eres Bypass Valve	50	
<b>ER-22MMSTRBI</b> 22mm Straight Eres Bypass Valve	64	
<b>ER-28MMANGBI</b> 28mm Angled Eres Bypass Valve	63	
<b>ER-28MMSTRBI</b> 28mm Straight Eres Bypass Valve	63	

E&O.E.

### Notes

---



---



---



---



---

# Sealed Systems

## Reflex Robokit® Extra



Product Code	Box Qty	Price
CA-900008 8ltr Reflex Robokit® Extra Sealed System Kit	1	
CA-900012 12ltr Reflex Robokit® Extra Sealed System Kit	1	
CA-900018 18ltr Reflex Robokit® Extra Sealed System Kit	1	
CA-900024 24ltr Reflex Robokit® Extra Sealed System Kit	1	
CA-900000 ½" Sealed System Kit Only	1	

## Filling Loops



Product Code	Box Qty	Price
ALT-ST0035 WRAS Approved Filling Loop With Gauge & Caps	20	
CA-300606 WRAS Approved Filling Loop With No Caps	50	
CA-300611 WRAS Approved Filling Loop C/W Caps	50	

E&O.E.

### Notes

---



---



---



---



---



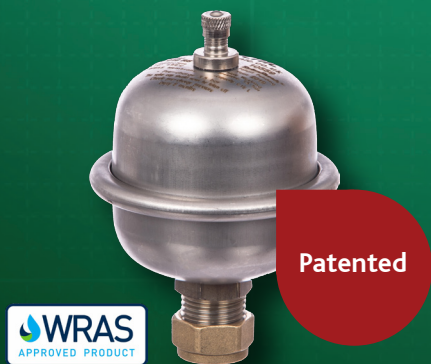
# Vessels

## Reflex Potable Vessels



Product Code	Box Qty	Price
<b>PV2Z</b> 2ltr Reflex Potable Vessel 1/2" Conn	1	
<b>PV8W</b> 8ltr Reflex Potable Vessel 1/2" Conn	1	
<b>PV12W</b> 12ltr Reflex Potable Vessel 1/2" Conn	1	
<b>PV18W</b> 18ltr Reflex Potable Vessel 1/2" Conn	1	
<b>PV25W</b> 25ltr Reflex Potable Vessel 1/2" Conn	1	

## Roboshock Arrestor®



Product Code	Box Qty	Price
<b>PV016RS</b> 0.16ltr Shock Arrestor 15mm Conn Roboshock	10	
<b>PV016C</b> 0.16ltr Shock Arrestor 1/2" Conn Roboshock	10	
<b>PV016D</b> 0.16ltr Shock Arrestor 1/4" Conn Roboshock	10	

E&O.E.

### Notes

---



---



---



---



---

# Vessels

## Reflex Heating Vessels



Product Code	Box Qty	Price
<b>HV8C</b> 8ltr Reflex Heating Vessel	1	
<b>HV12C</b> 12ltr Reflex Heating Vessel	1	
<b>HV18C</b> 18ltr Reflex Heating Vessel	1	
<b>HV25C</b> 25ltr Reflex Heating Vessel	1	

## Mounting Brackets



Product Code	Box Qty	Price
<b>RS-MB2</b> 8-18ltr Mounting Bracket Only	80	
<b>RS-MB24</b> 24ltr Mounting Bracket Only (2 Straps)	20	

E&O.E.

### Notes

---



---



---



---




---

# Tundishes

## Tundishes



Product Code	Box Qty	Price
<b>AL-400010</b> 15mm x 22mm Straight Plastic Tundish	<b>532</b>	
<b>AP-400011</b> 22mm x 28mm Straight Plastic Tundish	<b>160</b>	
<b>128-4001</b> 15mm x 22mm Straight Plastic Tundish Flat Back	<b>369</b>	

E&O.E.

### Notes

---

---

---

---

---

# Safety Relief Valves

## Safety Relief Valves



Product Code	Box Qty	Price
<b>311430</b> 1/2" x 1/2" x 3 Bar SRV	50	
<b>311460</b> 1/2" x 1/2" x 6 Bar SRV	50	
<b>313430</b> 1/2" x 1/2" x 3 Bar SRV c/w Gauge	50	
<b>313460</b> 1/2" x 1/2" x 6 Bar SRV c/w Gauge	50	
<b>314437</b> 1/2" x 1/2" x 3 Bar SRV	50	

E&O.E.

### Notes

---

---

---

---

---

# Dirt & Air Separation

altecnic

## Dirtmag Mini™



Product Code	Box Qty	Price
114-1020 Dirtmag Mini™ 22mm Magnetic Filter Only	5	
114-1050 Dirtmag Mini™ 22mm Magnetic Compliance Pack	1	
114-1100 Dirtmag Mini™ & DiscalSlim Combination Pack	1	

## Dirtmag IQ™ Prime



Product Code	Box Qty	Price
545342LTC 22mm Dirtmag™ Prime Filter Only	5	
545343LTC 28mm Dirtmag™ Prime Filter Only	5	
114-1001 22mm Dirtmag™ Prime Compliance Pack A	5	
114-1011 28mm Dirtmag™ Prime Compliance Pack A	5	
114-1004 22mm Dirtmag™ Prime Compliance Pack D	5	
114-1014 28mm Dirtmag™ Prime Compliance Pack D	5	

E&O.E.

### Notes

---



---



---



---



---

# Dirt & Air Separation

## Air Vents



Product Code	Box Qty	Price
502649 15mm Robocal Auto Air Vent	10	
502640 1/2" Robocal Auto Air Vent	10	
502430 3/8" Robocal Auto Air Vent	10	
508041 1/2" Hygroscopic Manual Air Vent	25	
118-1001 CST 1/2" Chrome Auto Air Vent	1000	

E&O.E.

### Notes

---

---

---

---

---

# Dirt & Air Separation

altecnic

## DiscalSlim®



Product Code	Box Qty	Price
551802 22mm DiscalSlim® Compact De-aerator	5	

## System Cleaning



Product Code	Box Qty	Price
114-9001 System Cleaner 500ml	12	
114-9002 System Inhibitor 500ml	12	
114-9003 15mm Electrolytic Scale Reducer	10	
114-9005 22mm Electrolytic Scale Reducer	10	
570915 C3 Fast Aerosol Cleaner 400ml	10	
570916 C1 Fast Aerosol Inhibitor 400ml	10	

E&O.E.

### Notes

---



---



---



---



---

# Backflow Prevention

## Check Valves



Product Code	Box Qty	Price
<b>BI-100034</b> 15mm Single Check Valve	40	
<b>BI-100S22</b> 22mm Single Check Valve	144	
<b>BI-100S28</b> 28mm Single Check Valve	90	
<b>AI-903215</b> 15mm Ecofil Double Check Valve	100	
<b>AI-903222</b> 22mm Ecofil Double Check Valve	50	
<b>AI-903228</b> 28mm Ecofil Double Check Valve	25	

E&O.E.

### Notes

---



---



---



---

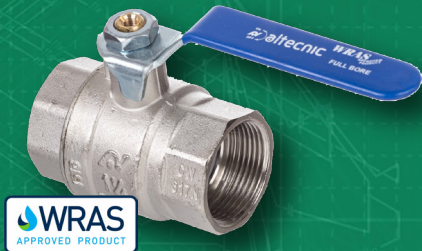


---



## Ball Valves

### Ball Valves (Water)



Product Code	Box Qty	Price
<b>AI-373B15</b> 15mm Full Bore Blue Lever Ball Valves	20	
<b>AI-373B22</b> 22mm Full Bore Blue Lever Ball Valves	10	
<b>AI-373B28</b> 28mm Full Bore Blue Lever Ball Valves	8	
<b>AI-373115</b> 15mm Full Bore Blue Butterfly Ball Valves	20	
<b>AI-373222</b> 22mm Full Bore Blue Butterfly Ball Valves	15	
<b>AI-373228</b> 28mm Full Bore Blue Butterfly Ball Valves	8	
<b>AI-373R15</b> 15mm Full Bore Red Lever Ball Valves	20	
<b>AI-373R22</b> 22mm Full Bore Red Lever Ball Valves	10	
<b>AI-373R28</b> 28mm Full Bore Red Lever Ball Valves	8	
<b>AI-373RB5</b> 15mm Full Bore Red Butterfly Ball Valves	20	
<b>AI-373RB2</b> 22mm Full Bore Red Butterfly Ball Valves	15	
<b>AI-373RB8</b> 28mm Full Bore Red Butterfly Ball Valves	8	

E&O.E.

#### Notes

---



---



---



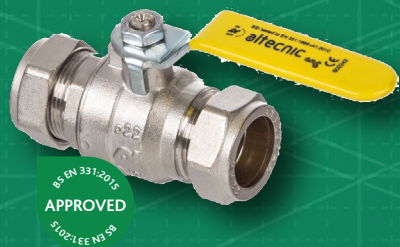
---



---

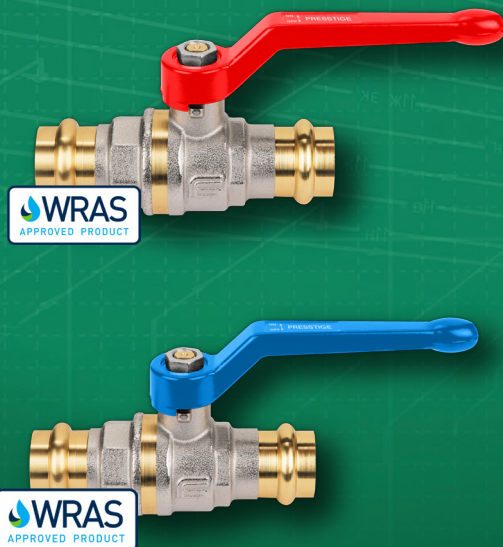
# Ball Valves

## Gas Ball Valves



Product Code	Box Qty	Price
AI-331115 15mm Full Bore Gas Lever Ball Valve	20	
AI-331122 22mm Full Bore Gas Lever Ball Valve	10	
AI-331128 28mm Full Bore Gas Lever Ball Valve	8	

## Press Fit Ball Valves



Product Code	Box Qty	Price
124-8101 15mm Press Fit Red Lever Ball Valves	20	
124-8103 22mm Press Fit Red Lever Ball Valves	10	
124-8104 28mm Press Fit Red Lever Ball Valves	8	
124-8201 15mm Press Fit Blue Lever Ball Valves	20	
124-8203 22mm Press Fit Blue Lever Ball Valves	10	
124-8204 28mm Press Fit Blue Lever Ball Valves	8	

E&O.E.

### Notes

---



---



---



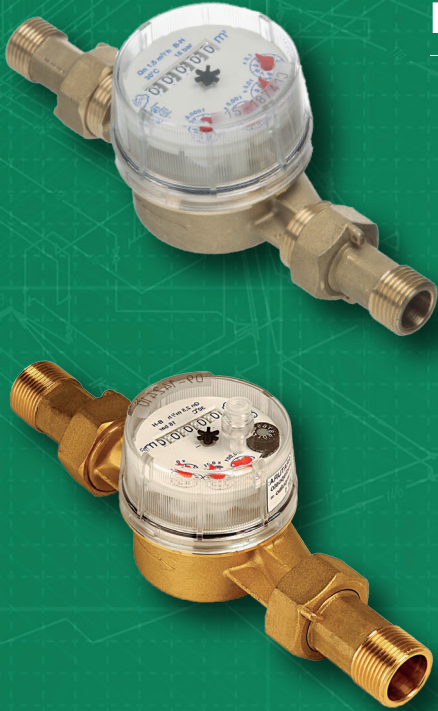
---



---

## Metering

### Cold Water Meters



Product Code	Box Qty	Price
<b>GG-3003F13</b> 1/2" Cold Water Meter Non Pulsed	25	
<b>GG-3005F20</b> 3/4" Cold Water Meter Non Pulsed	18	
<b>GG-USLF15P1</b> 1/2" Cold Water Meter Pulsed	20	
<b>GG-USLF20P1</b> 3/4" Cold Water Meter Pulsed	1	

E&O.E.

#### Notes

---



---



---



---



---

# Meet your north division sales managers

Contact your area sales manager for enquiries or more information about the entire altecnic product range



**Steve Boyd**  
Head of Trade Sales  
44 (0)7800 977 883  
steve.boyd@altecnic.co.uk



**Martin McNairn**  
Northern Regional Trade Sales Manager  
+44 (0)7764 502 651  
martin.mcnairn@altecnic.co.uk



**Graham Heap**  
Area Sales Manager  
+44 (0)7764 502 661  
graham.heap@altecnic.co.uk



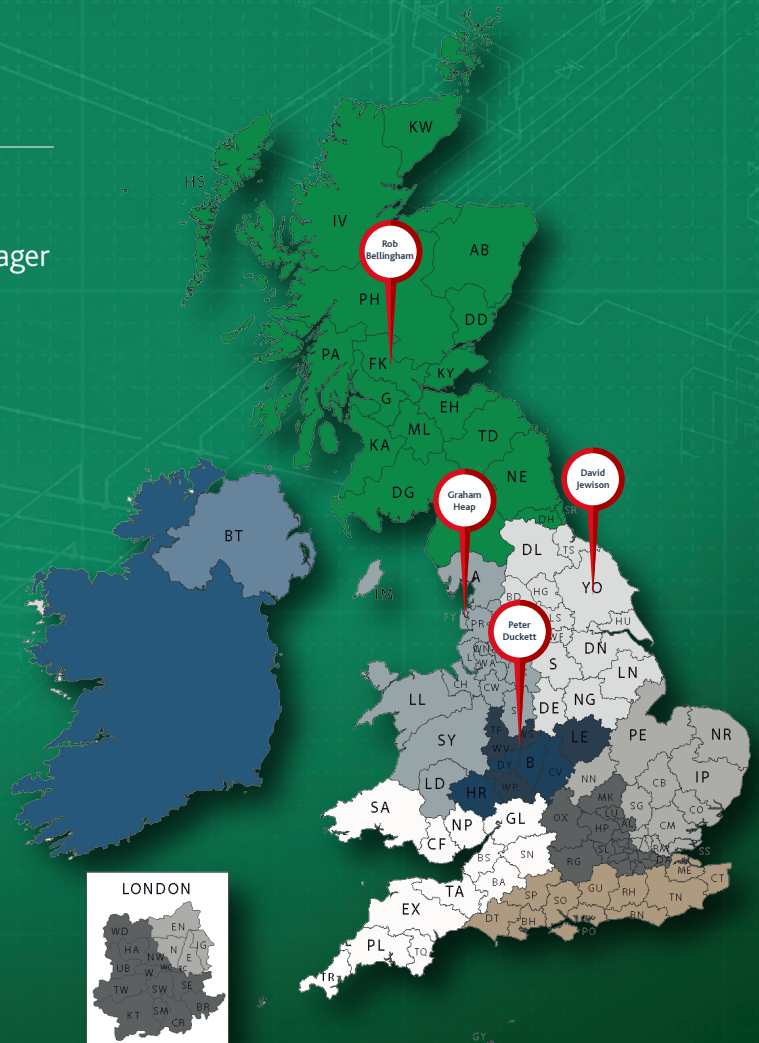
**Peter Duckett**  
Area Sales Manager  
+44 (0)7764 502 650  
peter.duckett@altecnic.co.uk



**Robert Bellingham**  
Area Sales Manager  
+44 (0)7887 454 174  
robert.bellingham@altecnic.co.uk



**David Jewison**  
Area Sales Manager  
+44 (0)7764 502 658  
david.jewison@altecnic.co.uk



+44 (0)1785 218 200  
tradesales@altecnic.co.uk

## Meet your south division sales managers

Contact your area sales manager for enquiries or more information about the entire altecnic product range



**Steve Boyd**

Head of Trade Sales  
+44 (0)7800 977 883  
steve.boyd@altecnic.co.uk



**Bryan Bull**

Southern Regional Trade Sales Manager  
44 (0)7814 489 949  
bryan.bull@altecnic.co.uk



**Ian Church**

Area Sales Manager  
+44 (0)7764 502 664  
ian.church@altecnic.co.uk



**Paul George**

Area Sales Manager  
+44 (0)7764 502 666  
paul.george@altecnic.co.uk



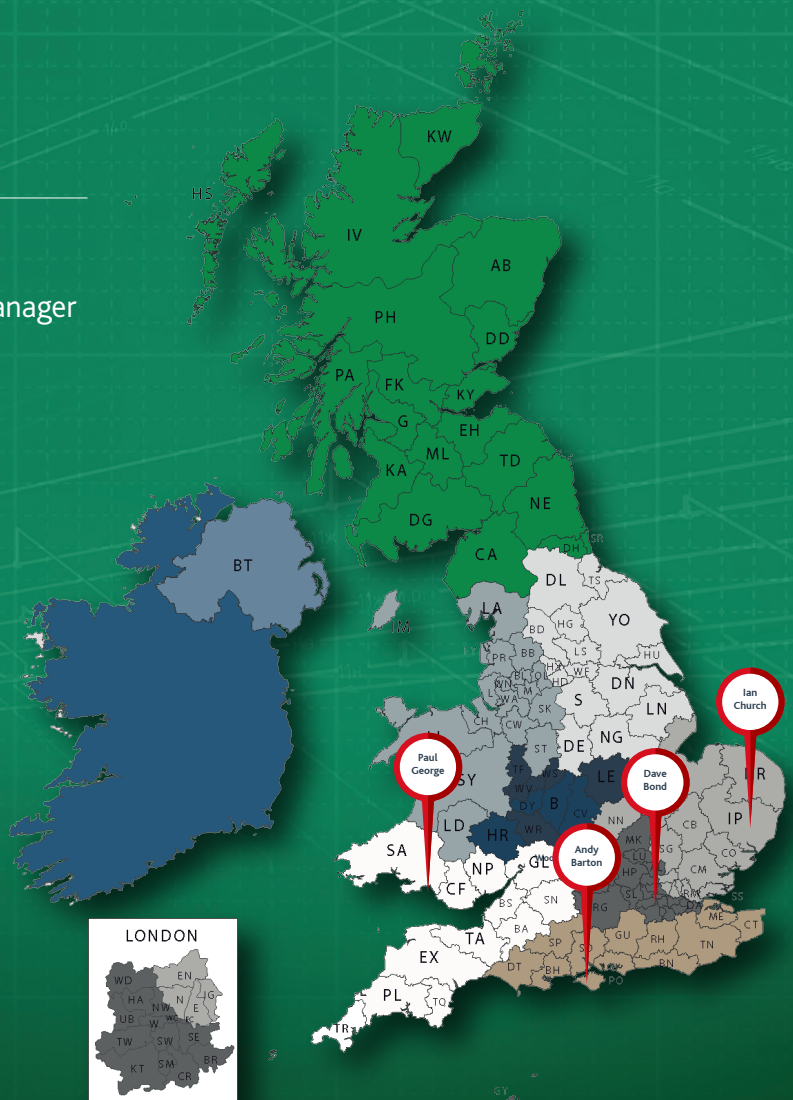
**Dave Bond**

Area Sales Manager  
+44 (0)7887 454 375  
dave.bond@altecnic.co.uk



**Andy Barton**

Area Sales Manager  
+44 (0)7764 502 669  
andrew.barton@altecnic.co.uk







# altecnic

## General Information

### Office Hours:

Monday to Friday 8:30am - 5:00pm

### Prices:

Prices are exclusive of VAT, and are subject to change without notice.

All prices displayed are recognised as list.

### Terms:

A copy of Altecnic's terms are available on request.

### Property of goods:

Until full payment has been received, all goods supplied remain the property of Altecnic Ltd.

### Delivery:

Carriage paid 3 day service, UK mainland only. (Minimum order value of £100 applies or £7.50 small order charge applies)

## Customer Care Notice

Full details of Altecnic's Returns Policy are available at [www.altecnic.co.uk](http://www.altecnic.co.uk)

# altecnic.co.uk



## Altecnic Ltd

Mustang Drive, Stafford, Staffordshire, ST16 1GW

T: 01785 218200 F: 01785 218201 E: [sales@altecnic.co.uk](mailto:sales@altecnic.co.uk)

Registered in England No: 2095101

© Patents & Design Altecnic 2020

Altecnic Ltd retains all rights (including patents, designs and copyrights, trademarks and any other intellectual property rights) in relation to all information provided via the website, brochures or any other documents, including all texts, graphics and logos, contained on the website, in brochures or in any other documents published in the name of or on behalf of Altecnic Ltd in any form, without prior written consent of Altecnic Ltd.